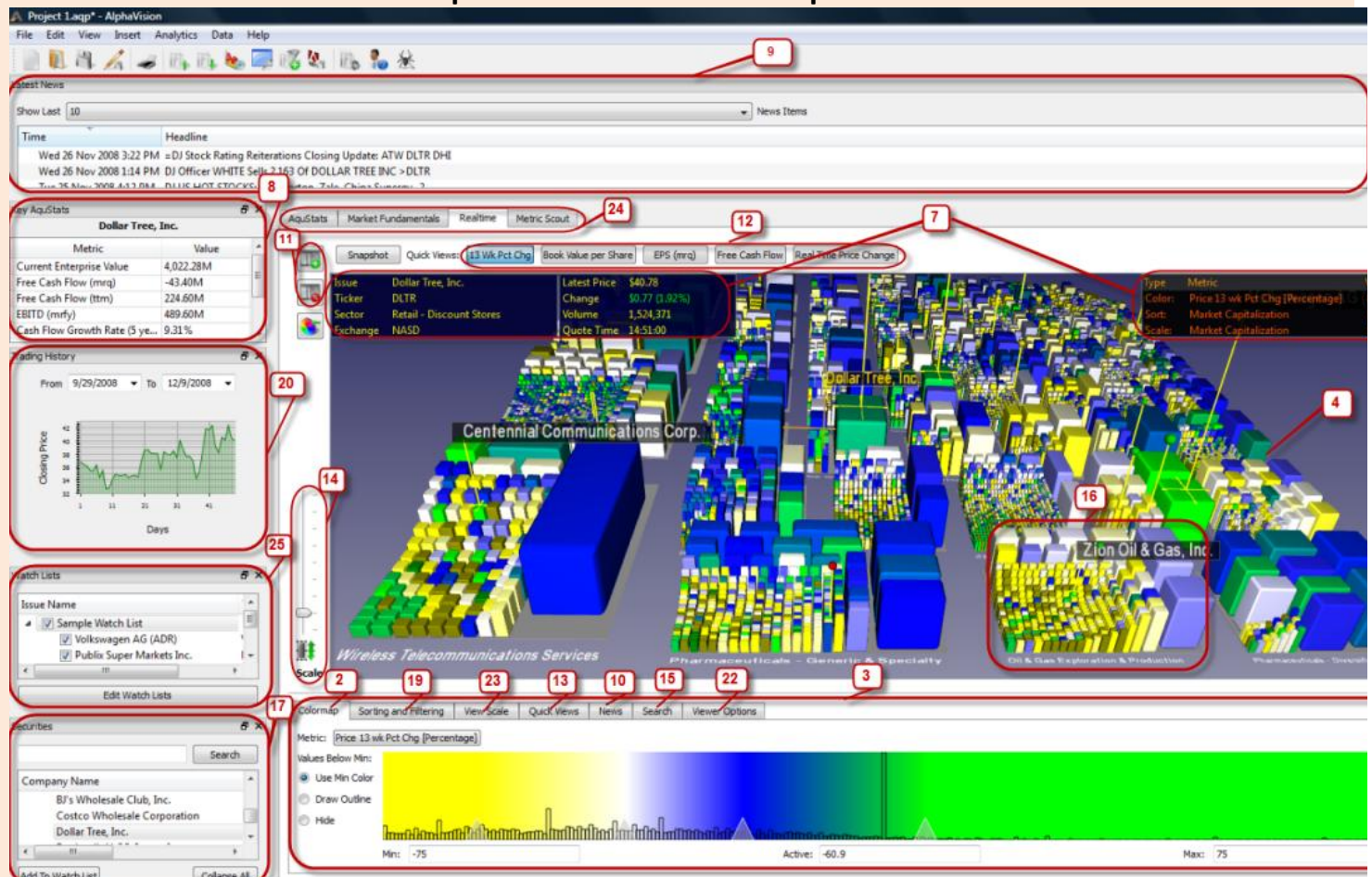


AlphaVision 1.1 Screen Components



1. Auto Zoom On/Off	When turned on will automatically zoom in on selected equity	Using Your Mouse to navigate the Landscape: Rotate/Pivot = Left mouse (click and drag 360°) Pan/Move = Middle mouse (click and drag) or ALT+Left Mouse Zoom = Right mouse (click and drag) or Mouse wheel Center Area = Shift + Left click Select Stock = Double click Left mouse Links: Google/Yahoo/SEC Filings = Right click and
2. Colormap Tab	Controls color and Min./Max. range	
3. Control Panel	Tabs to controls size, color and height metrics to create market views	
4. Equity Landscape	3 Dimensional view of equities grouped by Market Sector	
5. Flip Positive/Negative	Flips the landscape to view companies above/below the horizon	
6. Go Home Button	Will return to the saved size/position of the landscape view	
7. Heads Up Display	Provides information about an equity selected on the Landscape	
8. Key AquStats Data Pane	Statistics chosen from AquStats for an equity selected on the Landscape	
9. Latest News	Headlines/links to news/press releases, etc	
10. News Tab	To control display of news	
11. Open/Close Control Panel	Click to open or close Control Panel to allow more area for landscape	
12. Quick Views Bar	Toggle between different market Views (pre-defined or user-defined)	
13. Quick Views Tab	Lists Views to add to Quick Views Bar	
14. Scale/Height Bar	Controls the building height	
16. Sector	Market sector, names appear lower front of each Sector	
17. Securities Data Pane	To choose or select stocks by ticker or company name	
18. Set Home Button	Will save a size and position of the landscape view	
19. Sorting and Filtering Tab	Controls size/position	
20. Trading History Pane	Shows EOD stock prices for time period specified	
21. View All	Restores the landscape to small/centered	
22. Viewer Options Tab	To control brightness, contrast, lighting, etc	
23. View Scale Tab	Controls height	
24. Landscape Tabs	Choices for populating the landscape pane	
AquStats	Over 90 statistics for any equity you click on the landscape	

Market Fundamentals	Equity landscape showing fundamental data	hold on selected stock Add to Watch List = Right click on selected stock
RealTime	Price Data in real time (update intervals: 60 seconds to 1 hour)	
Metric Scout	Find or create user defined metrics (metrics in combination)	
25. Watch Lists Data Pane	Create and use named lists to easily find chosen issues on landscape	
26. Zoom Control	Drag wheel up/down to zoom in/out.	